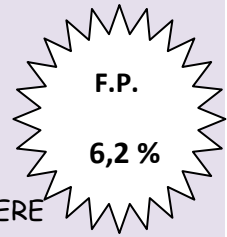


Borium

D K R GENETICAL BORIUM ET BLF CVF DPF MFF BYF

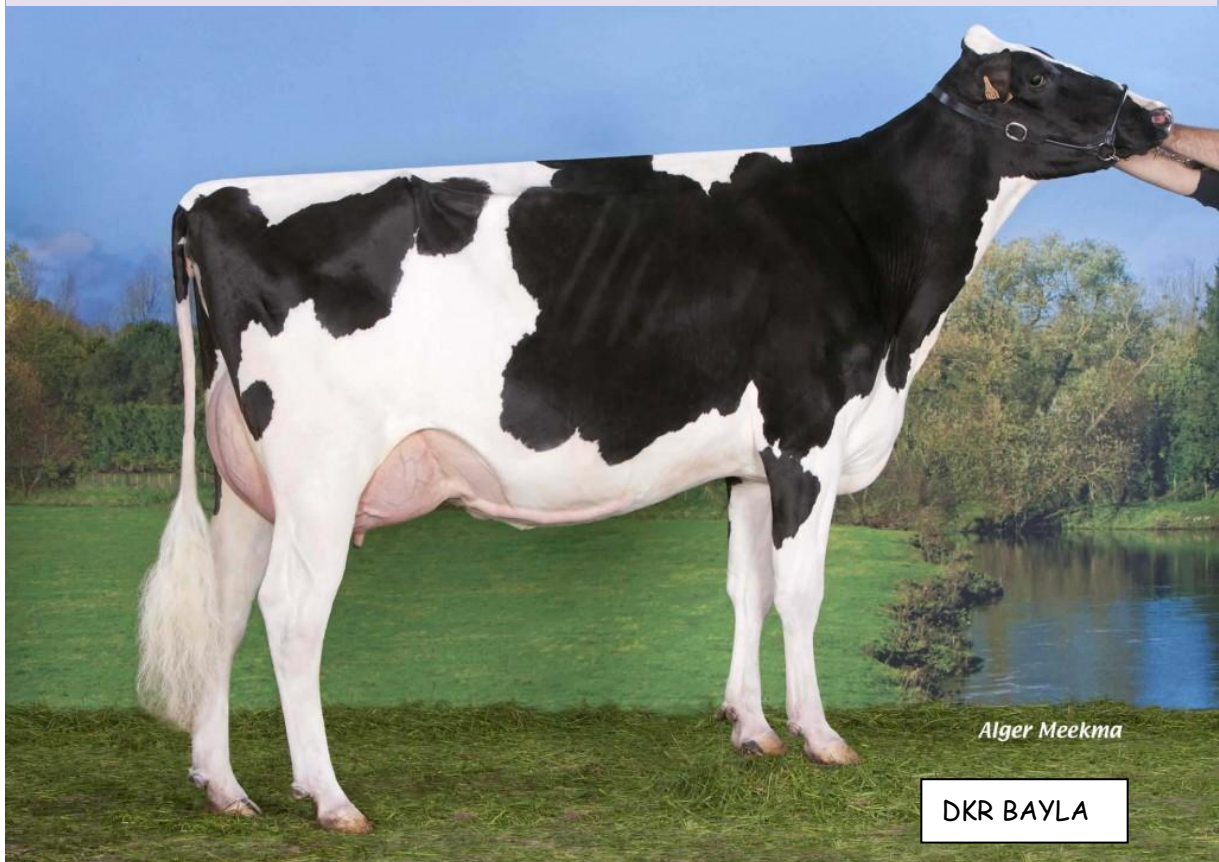
ESPM9204084691 f.nto. 24/6/2014 NL000754084392

SEAGULL-BAY PLATINUM ETS X DKR BAYLA V686 (GARRET) X BAVIERE
V687 (SHOTLE) X JOCKO JEN V686 (JOCKO BESN) X SUNNYLODGE
RUDOLPH JEN EX90 (RUDOLPH)



GICO	LECHE	ICU	D.A.
3919	+ 1925	+ 0,28	106
RCS	LONG	IGT	IPP
118	112	+ 0,7	+ 0,88

A2A2
beta caseína



Alger Meekma

DKR BAYLA

FEFRICALE. www.fefricale.es fefricale@fefricale.com. Telf 629624328.

Euro Fomento Pecuario S.A. quique@eurofomento.com. Telf 607847799.