

# Candy

PEAK GEFRI CANDY ET BLF CVF DPF MFF BYF

ESPM9204576648 f.nto. 17/4/2017 NL000685695885

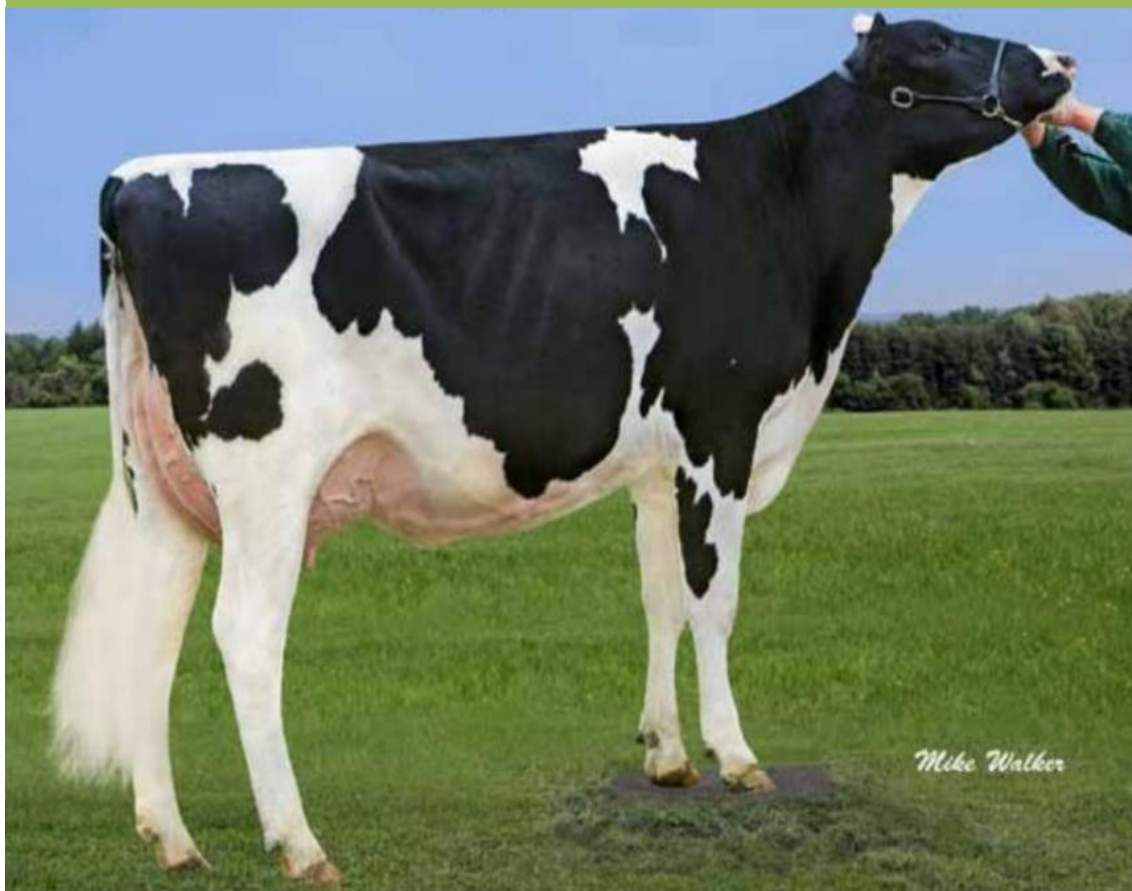
PEAK ALTAAMULET ET X GREEN-BANKS CANDY ET  
(MONTEREY) X SCO-LO-KRUSE CANDY ET EX90 (DEAN) X  
LARCREST CORALEE ET GP83 (GERARD)



---

GICO	LECHE	% PROT	IPP	RCS	LONG	ICU	IGT
4170	+ 1271	+ 0,09	+ 1,21	110	130	+ 2,20	+ 1,82

---



FEFRICALE. [www.fefricale.es](http://www.fefricale.es) [fefricale@fefricale.com](mailto:fefricale@fefricale.com). Telf 629624328.

Euro Fomento Pecuario S.A. [quique@eurofomento.com](mailto:quique@eurofomento.com). Telf 607847799.